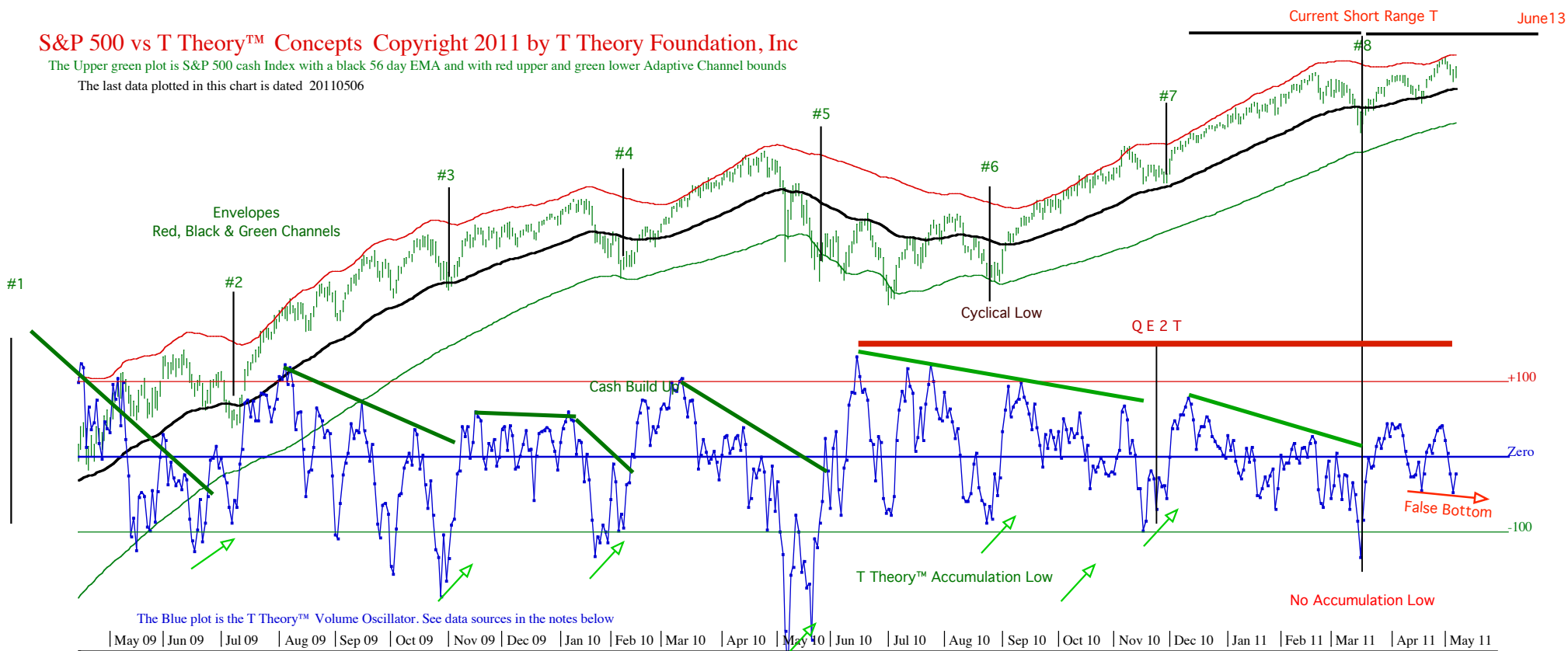


T Theory Observations Charts for Monday May 9 2011

S&P 500 vs T Theory™ Concepts Copyright 2011 by T Theory Foundation, Inc

The Upper green plot is S&P 500 cash Index with a black 56 day EMA and with red upper and green lower Adaptive Channel bounds

The last data plotted in this chart is dated 20110506



The Blue plot is the T Theory™ Volume Oscillator. See data sources in the notes below

May 09 | Jun 09 | Jul 09 | Aug 09 | Sep 09 | Oct 09 | Nov 09 | Dec 09 | Jan 10 | Feb 10 | Mar 10 | Apr 10 | May 10 | Jun 10 | Jul 10 | Aug 10 | Sep 10 | Oct 10 | Nov 10 | Dec 10 | Jan 11 | Feb 11 | Mar 11 | Apr 11 | May 11

The black S&P Mid Channel line is 1318

The red S&P Upper Channel bound is 1373

The Green S&P Lower Channel bound is 1264

Last T Theory Volume Oscillator value plotted is -21

*For Volume Oscillator Data calculations: goto http://www.mcoscillator.com/market_breadth_data/ and download Daily Osc Data Spreadsheet ; Column Q = T Theory™ Volume Osc times 1000

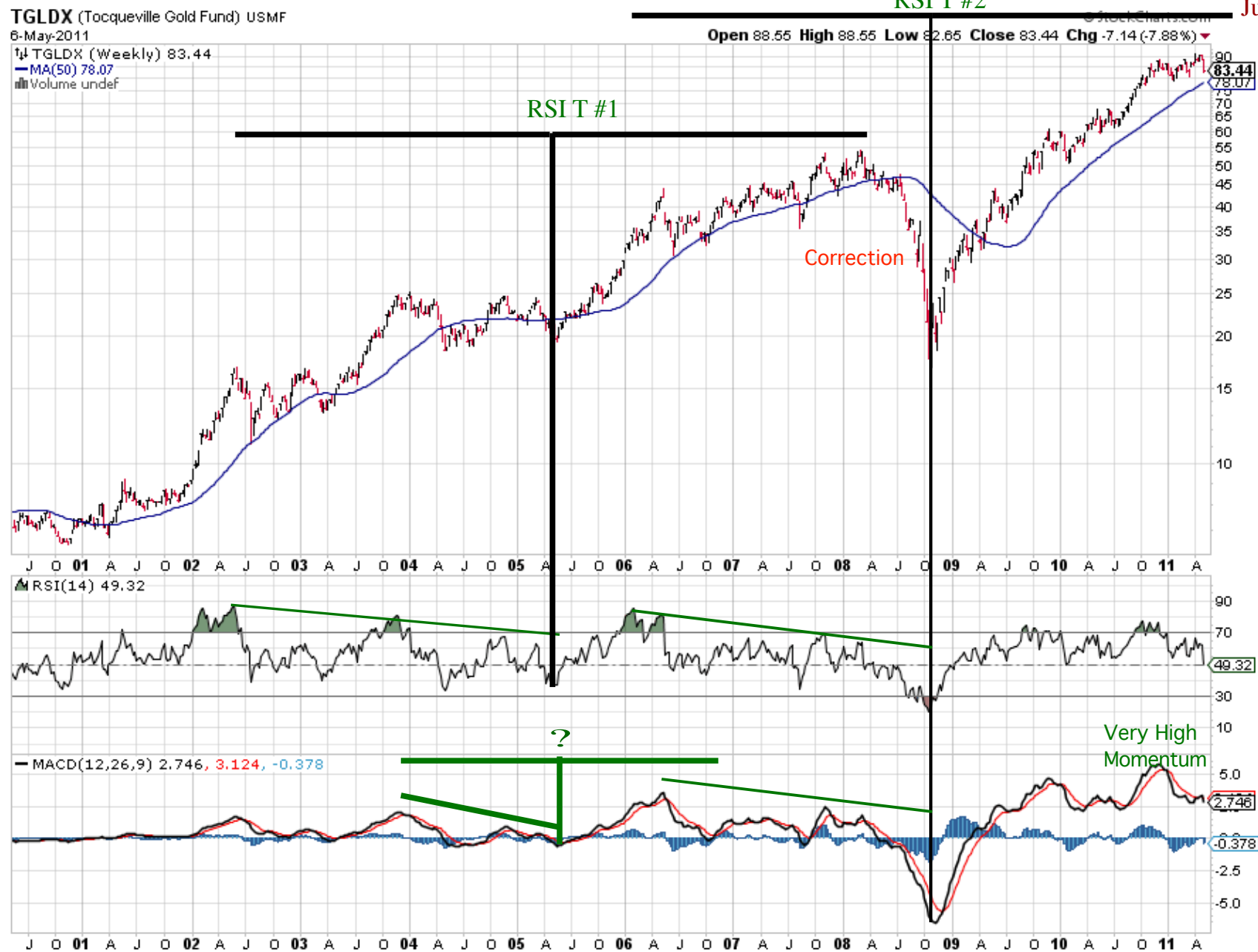
TGLDX (Tocqueville Gold Fund) USMF

6-May-2011

TGLDX (Weekly) 83.44

MA(50) 78.07

Volume undef



TLT (iShares Barclays 20+ Year Treasury Bond Fund (Leh) iShares) NYSE

6-May-2011

© StockCharts.com

Open 94.51 High 95.49 Low 94.35 Close 95.07 Volume 9.5M Chg -0.42 (-0.44%)

RSI(14) 67.07



\$GOLD (Gold - Continuous Contract (EOD)) INDX

6-May-2011

© StockCharts.com

Open 1474.00 High 1497.90 Low 1470.90 Close 1495.10 Chg +21.20 (+1.44%) ▲



\$SILVER (Silver - Continuous Contract (EOD)) INDX

6-May-2011

© StockCharts.com

Open 34.93 High 36.39 Low 33.15 Close 35.60 Chg +0.93 (+2.68%) ▲

▲ RSI(14) 34.87

▲ \$SILVER (Daily) 35.60

— MA(50) 38.89

— MA(200) 28.38

■ Volume undef

